



lokenath Enterprise

BUILDER & DEVELOPER

THE NUMBER / TYPE & CARPET AREA OF THE APARTMENT FOR SALE
IN THE PROJECT (151, PUTIARY PANCHANANTOLA ROAD, WARD NO.-115,
BOROUGH NO.-XIII, UNDER THE KOLKATA MUNICIPAL CORPORATIUN,
KOLKATA-700 082, P.S.-HARIDEVPUR.)

FIRST FLOOR:-

MKD	TYPE	CARPET AREA
FLAT NO.-1A	2 BHK	44.277 SQ.M.
FLAT NO.-1B	2 BHK	39.372 SQ.M.
FLAT NO.-1C	2 BHK	42.193 SQ.M.
FLAT NO.-1D	2 BHK	44.395 SQ.M.

THIRD FLOOR:-

MKD	TYPE	CARPET AREA
FLAT NO.-3A	3 BHK	61.087 SQ.M.
FLAT NO.-3B	1 BHK	27.898 SQ.M.
FLAT NO.-3C	1 BHK	28.134 SQ.M.
FLAT NO.-3D	2 BHK	47.138 SQ.M.

SECOND FLOOR:-

MKD	TYPE	CARPET AREA
FLAT NO.-2A	3 BHK	85.351 SQ.M.
FLAT NO.-2B	3 BHK	83.832 SQ.M.

NOTE:-

- (01) TOTAL NO. OF FLATS = 10 NOS.
- (02) PROPOSED BUILDING = G+III
- (03) PLEASE SEE THE SEPARATE SHEET FOR DETAILS CALCULATION OF CARPET AREA OF FLATS

Ashis Kundu

ASHIS KUNDU

B.C.E. (J.U.), L.B.S. No. 679 (I) K.M.C
25 B, Mahatma Gandhi Road
Kolkata-700 082

SIG. OF L.B.S.

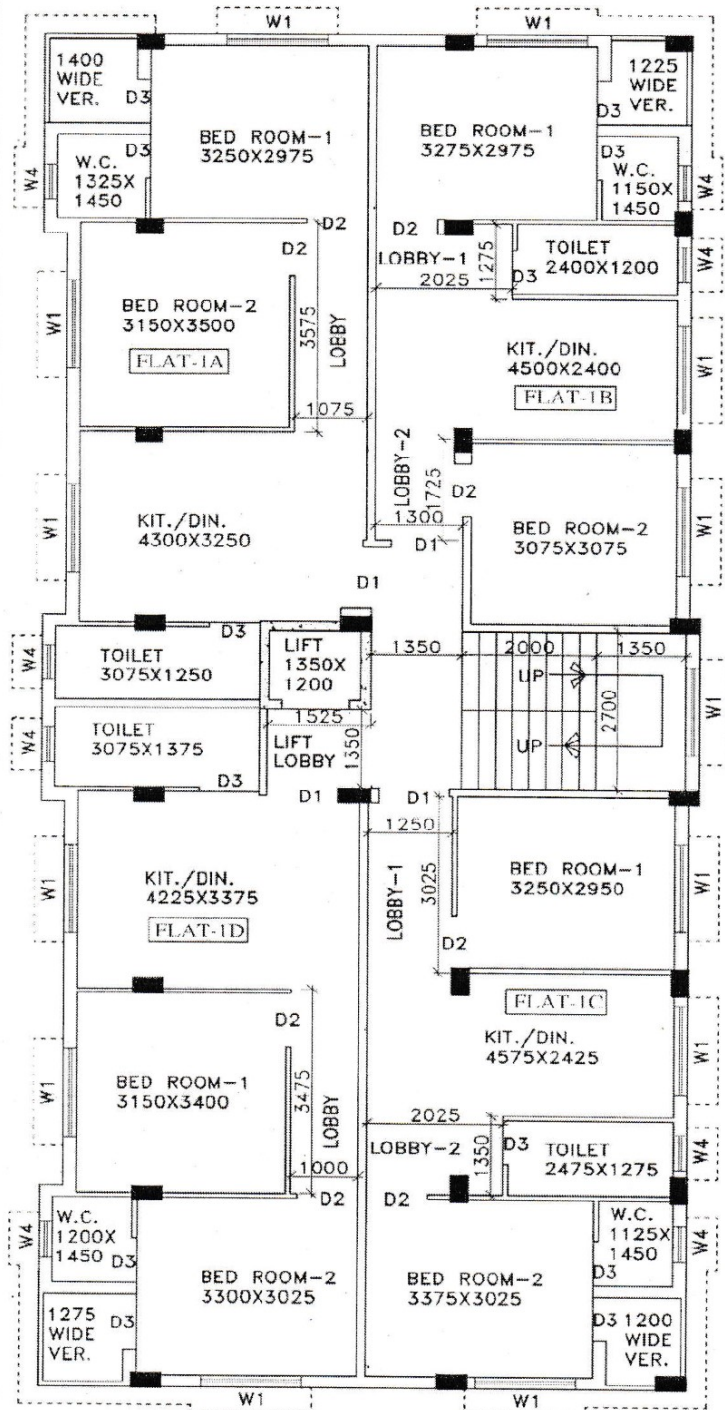
SIG. OF DEVELOPER



lokenath Enterprise

BUILDER & DEVELOPER

CARPET AREA OF MISC. FLAT ON 1ST. FLOOR OF G+III STORIED RESIDENTIAL BUILDING AT PREMISES NO -151, PUTIARY PANCHANANTOLA ROAD, IN WARD NO.-115, BOROUGH NO.-XIII, UNDER THE KOLKATA MUNICIPAL CORPORATION, KOLKATA - 700 041, P.S.-HARIDEVPUR.



FLAT MKD	PARTICULARS / DESCIBTION	AREA (SQ.M.)
FLAT NO-1A	BED RM-1(3.250X2.975)	9.669 SQ.M.
	BED RM-2(3.150X3.500)	11.025 SQ.M.
	TOILET (3.075X1.250)	3.844 SQ.M.
	W.C (1.325X1.450)	1.921 SQ.M.
	KIT./DIN (4.300X3.250)	13.975 SQ.M.
	LOBBY (1.075X3.575)	3.843 SQ.M.
	TOTAL CARPET AREA (EXCLUDING VERANDAH)	44.277 SQ.M.
FLAT NO-1B	BED RM-1(3.275X2.975)	9.743 SQ.M.
	BED RM-2(3.075X3.075)	9.456 SQ.M.
	TOILET (2.400X1.200)	2.880 SQ.M.
	W.C (1.150X1.450)	1.668 SQ.M.
	KIT./DIN (4.500X2.400)	10.800 SQ.M.
	LOBBY-1 (2.025X1.275)	2.582 SQ.M.
	LOBBY-2 (1.300X1.725)	2.243 SQ.M.
	TOTAL CARPET AREA (EXCLUDING VERANDAH)	39.372 SQ.M.
FLAT NO-1C	BED RM-1(3.250X2.950)	9.588 SQ.M.
	BED RM-2(3.375X3.025)	10.209 SQ.M.
	TOILET (2.475X1.275)	3.156 SQ.M.
	W.C (1.125X1.450)	1.631 SQ.M.
	KIT./DIN (4.575X2.425)	11.094 SQ.M.
	LOBBY-1 (1.250X3.025)	3.781 SQ.M.
	LOBBY-2 (2.025X1.350)	2.734 SQ.M.
	TOTAL CARPET AREA (EXCLUDING VERANDAH)	42.193 SQ.M.
FLAT NO-1D	BED RM-1(3.150X3.400)	10.710 SQ.M.
	BED RM-2(3.300X3.025)	9.983 SQ.M.
	TOILET (3.075X1.375)	4.228 SQ.M.
	W.C (1.200X1.450)	1.740 SQ.M.
	KIT./DIN (4.225X3.375)	14.259 SQ.M.
	LOBBY (1.000X3.475)	3.475 SQ.M.
	TOTAL CARPET AREA (EXCLUDING VERANDAH)	44.395 SQ.M.

Ashis Kundu
ASHIS KUNDU
 1ST. FLOOR PLAN

LOKENATH ENTERPRISE

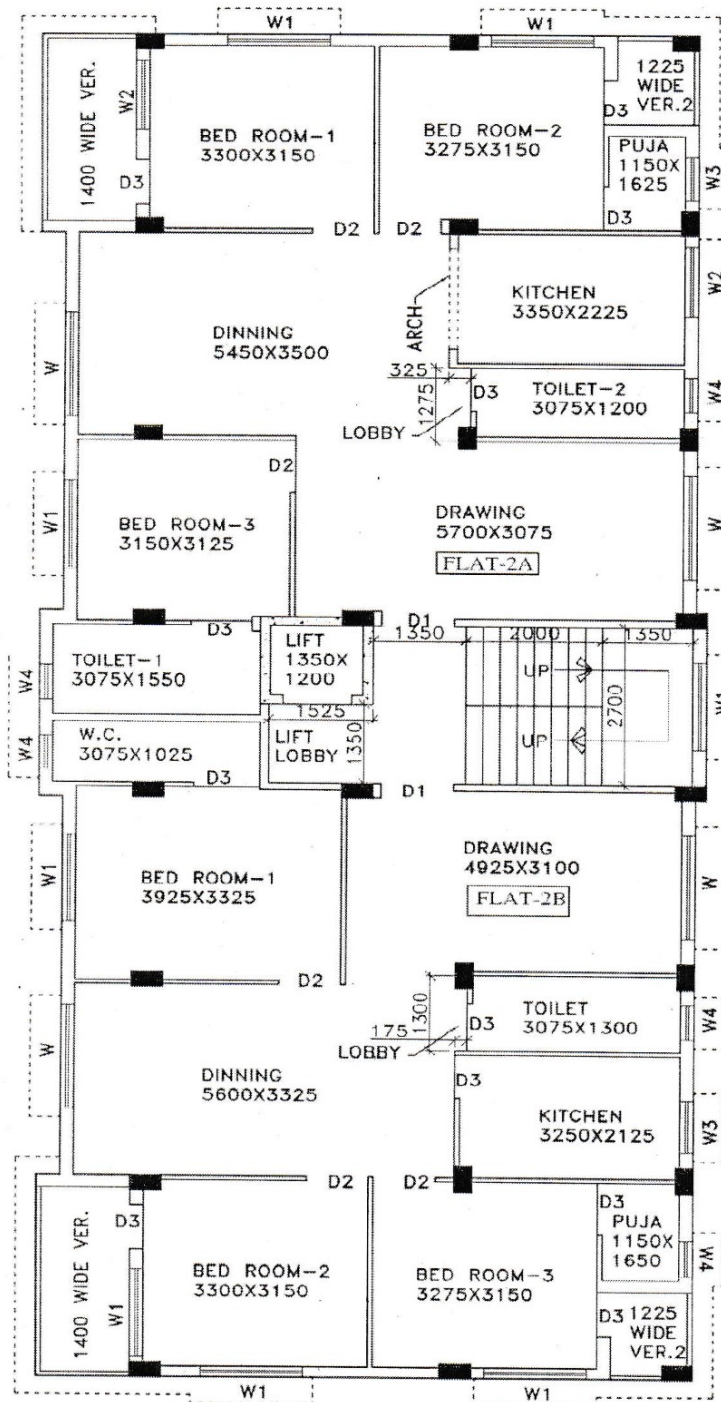
B.C.E. (J.U.), L.B.S. No. 679 (I) K.M.C.
 25 B, Mahatma Gandhi Road
 Kolkata-700 082

Ashis Banerjee Partner
Siddhartha Banerjee Partner



lokenath Enterprise
BUILDER & DEVELOPER

CARPET AREA OF MISC. FLAT ON 2ND. FLOOR OF G+III STORIED RESIDENTIAL BUILDING AT PREMISES NO.-151, PUTIARY PANCHANANTOLA ROAD, IN WARD NO.-115, BOROUGH NO.-XIII, UNDER THE KOLKATA MUNICIPAL CORPORATION, KOLKATA - 700 041, P.S.-HARIDEVPUR.



FLAT MKD	PARTICULARS / DESCIBTION	AREA (SQ.M.)
FLAT NO-2A	BED RM-1(3.300X3.150)	10.395 SQ.M.
	BED RM-2(3.275X3.150)	10.316 SQ.M.
	BED RM-3(3.150X3.125)	9.844 SQ.M.
	TOILET-1 (3.075X1.550)	4.766 SQ.M.
	TOILET-2 (3.075X1.200)	3.690 SQ.M.
	KITCHEN (3.350X2.225)	7.454 SQ.M.
	DINING (5.450X3.500)	19.075 SQ.M.
	DRAWING (5.700X3.075)	17.528 SQ.M.
	PUJA (1.150X1.625)	1.869 SQ.M.
	LOBBY (0.325X1.275)	0.414 SQ.M.
	TOTAL CARPET AREA (EXCLUDING VERANDAH)	85.351 SQ.M.
FLAT NO-2B	BED RM-1(3.925X3.325)	13.051 SQ.M.
	BED RM-2(3.300X3.150)	10.395 SQ.M.
	BED RM-3(3.275X3.150)	10.316 SQ.M.
	TOILET (3.075X1.300)	3.998 SQ.M.
	W.C (3.075X1.025)	3.152 SQ.M.
	KITCHEN (3.250X2.125)	6.906 SQ.M.
	DINING (5.600X3.325)	18.620 SQ.M.
	DRAWING (4.925X3.100)	15.268 SQ.M.
	PUJA (1.150X1.650)	1.898 SQ.M.
	LOBBY (0.175X1.300)	0.228 SQ.M.
	TOTAL CARPET AREA (EXCLUDING VERANDAH)	83.832 SQ.M.

2ND. FLOOR PLAN

Ashis Kundu
ASHIS KUNDU

B.C.E. (J.U.), L.B.S. No. 679 (I) K.M.C.
 25 B, Mahatma Gandhi Road
 Kolkata-700 082

LOKENATH ENTERPRISE

Ashim Banerjee
Partner

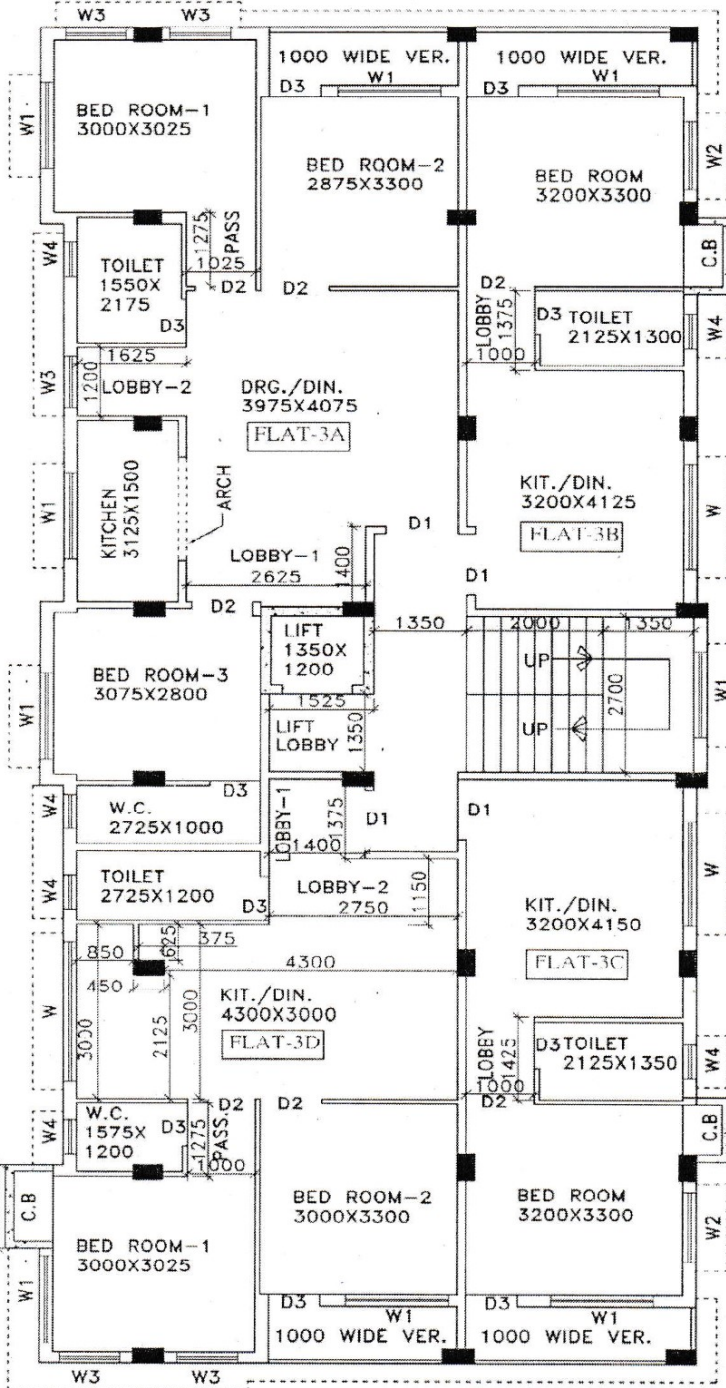
Harinal Karmakar
Partner



lokenath Enterprise

BUILDER & DEVELOPER

CARPET AREA OF MISC. FLAT ON 3RD. FLOOR OF G+III STORIED RESIDENTIAL BUILDING AT PREMISES NO.-151, PUTIARY PANCHANANTOLA ROAD, IN WARD NO.-115, BOROUGH NO.-XIII, UNDER THE KOLKATA MUNICIPAL CORPORATION, KOLKATA - 700 041, P.S.-HARIDEVPUR.



3RD. FLOOR PLAN

FLAT MKD	PARTICULARS / DESCRIPTION	AREA (SQ.M.)
FLAT NO-3A	BED RM-1 (3.000X3.025)	9.075 SQ.M.
	+ PASS (1.025X1.275)	1.307 SQ.M.
	BED RM-2 (2.875X3.300)	9.488 SQ.M.
	BED RM-3 (3.075X2.800)	8.610 SQ.M.
	TOILET (1.550X2.175)	3.371 SQ.M.
	W.C (2.725X1.000)	2.725 SQ.M.
	KITCHEN (3.125X1.500)	4.688 SQ.M.
	DRG./DIN (3.975X4.075)	16.198 SQ.M.
	LOBBY-1 (2.625X1.400)	3.675 SQ.M.
	LOBBY-2 (1.625X1.200)	1.950 SQ.M.
TOTAL CARPET AREA (EXCLUDING VERANDAH)		61.087 SQ.M.
FLAT NO-3B	BED RM (3.200X3.300)	10.560 SQ.M.
	KIT./DIN (3.200X4.125)	13.200 SQ.M.
	TOILET (2.125X1.300)	2.763 SQ.M.
	LOBBY (1.000X1.375)	1.375 SQ.M.
TOTAL CARPET AREA (EXCLUDING VERANDAH)		27.898 SQ.M.
FLAT NO-3C	BED RM (3.200X3.300)	10.560 SQ.M.
	KIT./DIN (3.200X4.150)	13.280 SQ.M.
	TOILET (2.125X1.350)	2.869 SQ.M.
	LOBBY (1.000X1.425)	1.425 SQ.M.
TOTAL CARPET AREA (EXCLUDING VERANDAH)		28.134 SQ.M.
FLAT NO-3D	BED RM-1 (3.000X3.025)	9.075 SQ.M.
	+ PASS (1.000X1.275)	1.275 SQ.M.
	BED RM-2 (3.000X3.300)	9.900 SQ.M.
	TOILET (2.725X1.200)	3.270 SQ.M.
	W.C (1.575X1.200)	1.890 SQ.M.
	KIT./DIN (4.300X3.000)	12.900 SQ.M.
	+ (0.850X3.000)	2.550 SQ.M.
	+ (0.450X2.125)	0.956 SQ.M.
	+ (0.375X0.625)	0.234 SQ.M.
	LOBBY-1 (1.400X1.375)	1.925 SQ.M.
LOBBY-2 (2.750X1.150)	3.163 SQ.M.	
TOTAL CARPET AREA (EXCLUDING VERANDAH)		47.138 SQ.M.

Ashis Kundu
ASHIS KUNDU

LOKENATH ENTERPRISE

Ashis Kundu *Abir Kumar*